

A NEW VETERINARY HOSPITAL

BROOKFIELD FARM

The Donkey Sanctuary is an international animal welfare charity whose vision is 'a world where donkeys and mules live free from suffering and their contribution to humanity is fully valued'. The Donkey Sanctuary plan to increase the number of rehomed donkeys to 3,000 by 2018 thus providing space to be able to accept any donkey or mule in the United Kingdom requiring care and welfare.

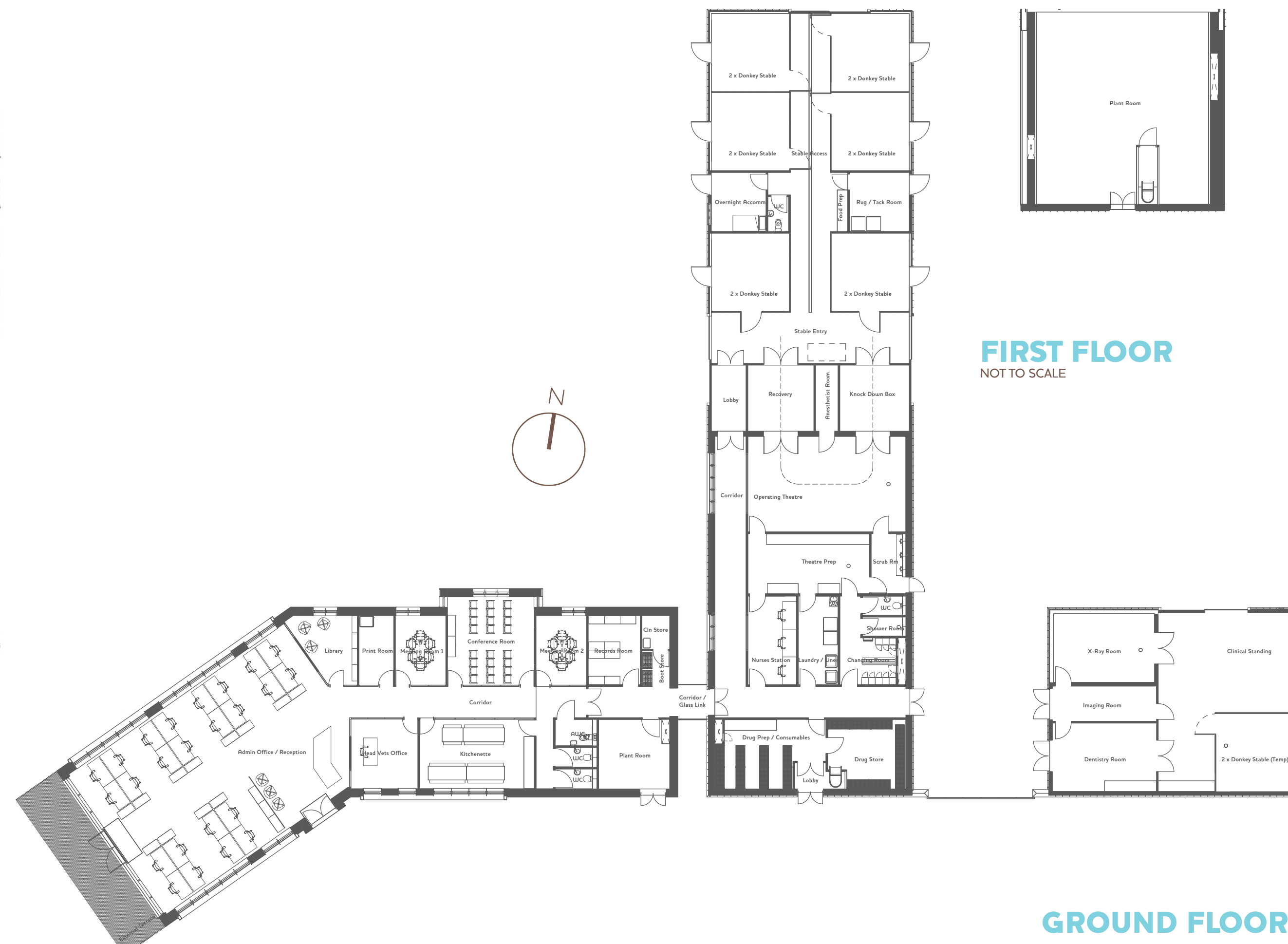
At present the Donkey Sanctuary has an existing Veterinary Hospital and Reception / Isolation Facility at Slade House Farm. To minimise the impact of any biosecurity hazard on the charity's operations and to reduce the risk of disease transmission, it is imperative that these facilities are relocated to another site that is away from visitors.

A 1,100sqm Veterinary Hospital is therefore proposed at Brookfield Farm, to the west of Slade Farm.

The new Veterinary Hospital will provide an operating theatre with ancillary pharmacy and medical areas. Additionally there will be treatment facilities for day patients, including X Ray, Dentistry and standing stocks.

There will be stabling for 12 patients, along with an overnight nurse's accommodation. There will also be office accommodation and welfare facilities for the veterinary staff.

Ancillary outbuildings will create space for a biomass boiler, recycling facilities / medical gasses and a cycle store.



ARTIST'S IMPRESSION

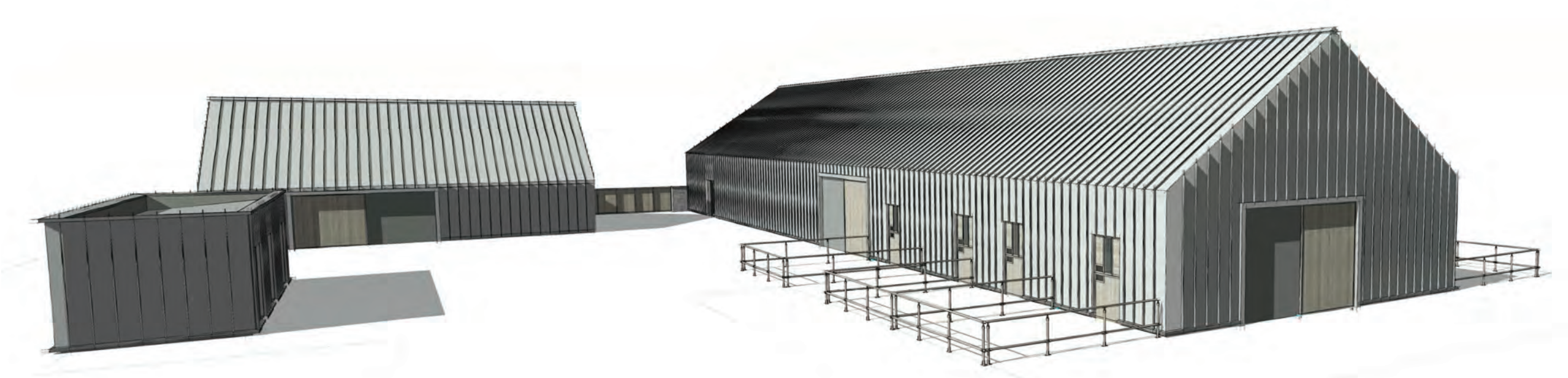
MASTER-PLAN

The northern fields will be used for the Veterinary Hospital and their associated shelters. The fields to the south will be used for the Reception / Isolation facility and their associated shelters. This provides a good degree of separation to limit disease spread between the Veterinary Hospital and Reception / Isolation.

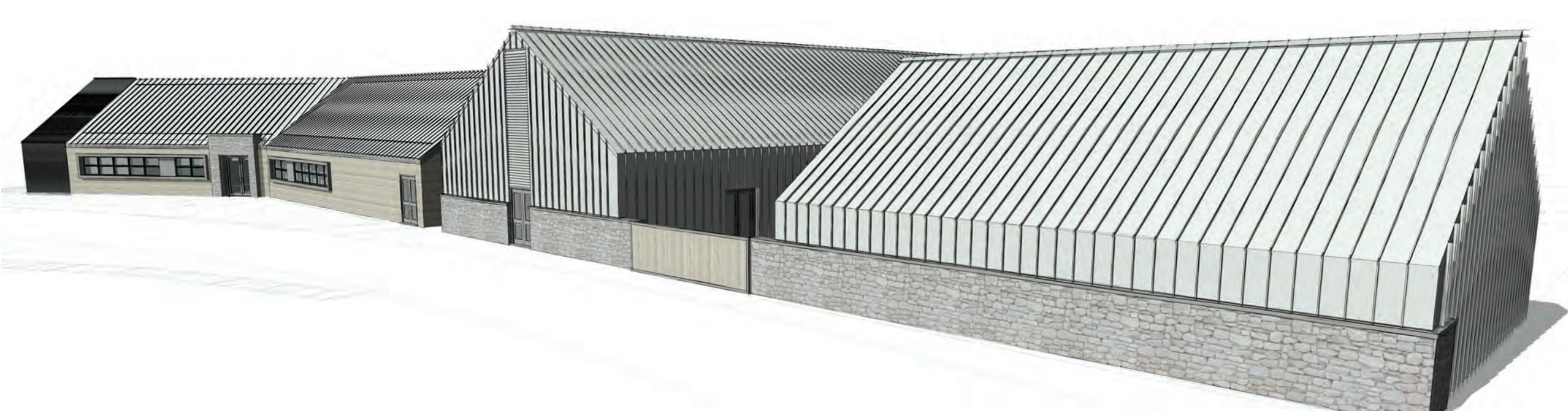
14 paddocks will be created with a donkey shelter located in the centre of each paddock. This layout splits the paddock into four separate areas of equal size, which enables the paddock to be grazed in rotation.



NORTH VIEW



SOUTH VIEW



EAST VIEW



The Veterinary Hospital has been designed with a contemporary design that reflects its agricultural context. It will be a world leading facility in terms of equine medical care, and it is intended that the architecture of this building will reflect its status.



DESIGN ETHOS

CONTEMPORARY AGRICULTURAL APPROACH

METAL STANDING SEAM ROOF AND WALLS

CLAD MEDICAL AND STABLE BLOCKS

HORIZONTAL TIMBER BOARDING

STONEWORK

LARGE AREAS OF GLAZING